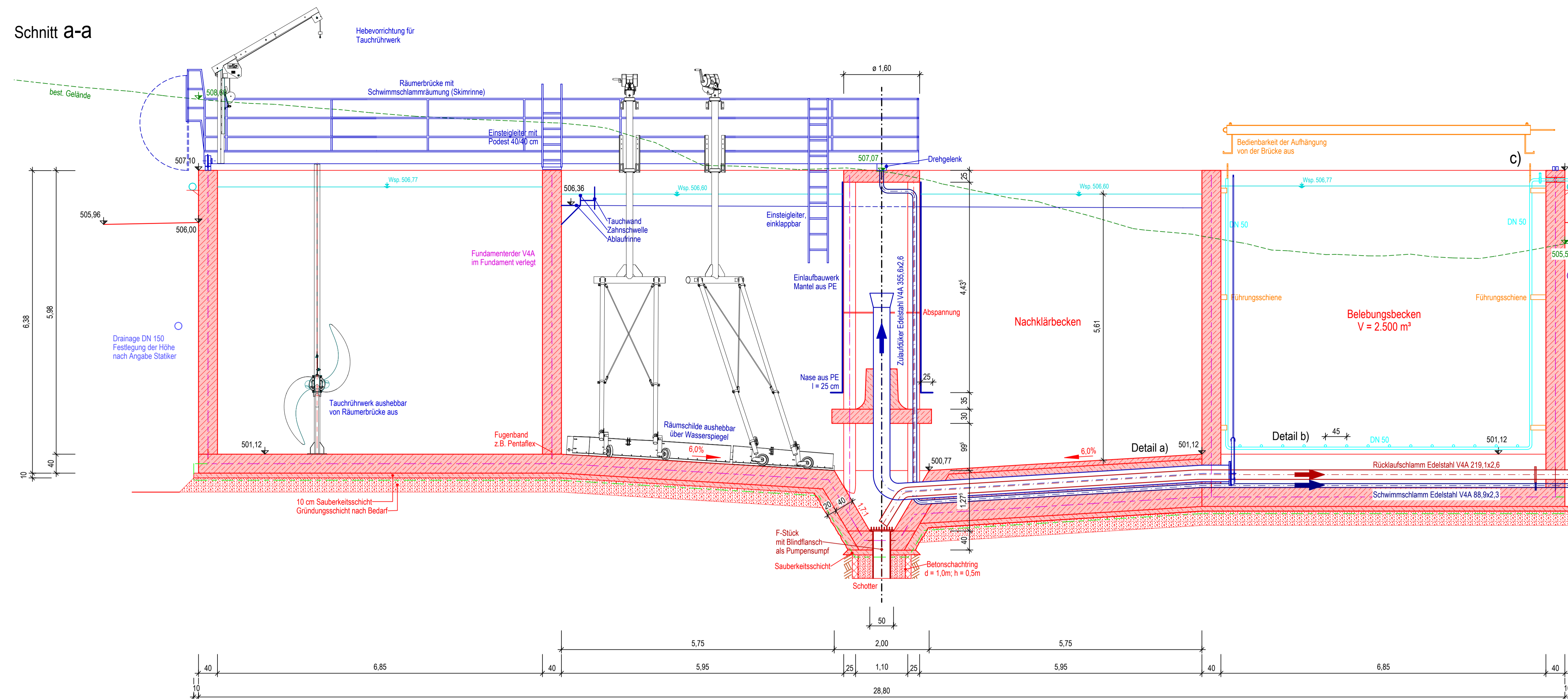
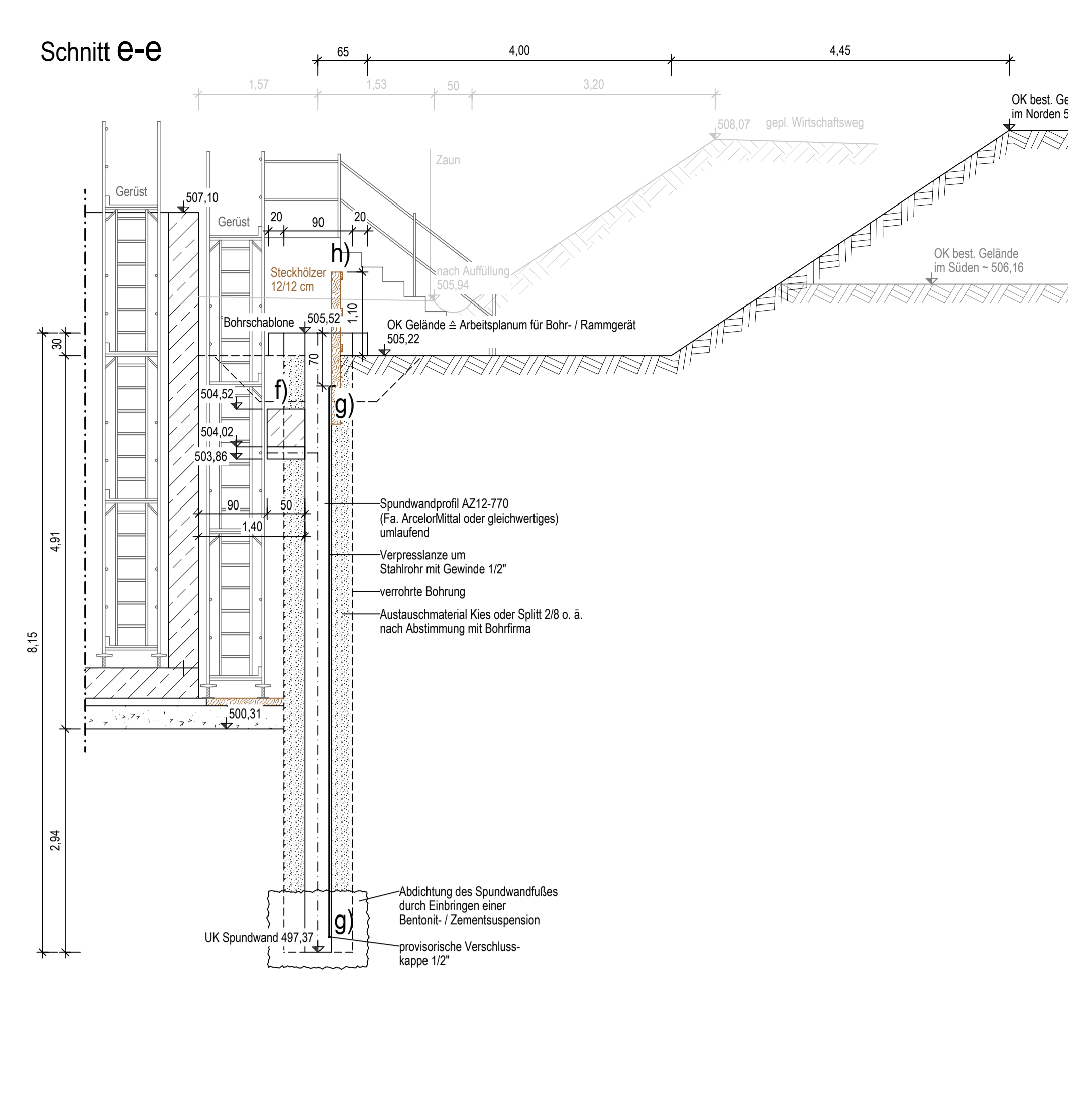


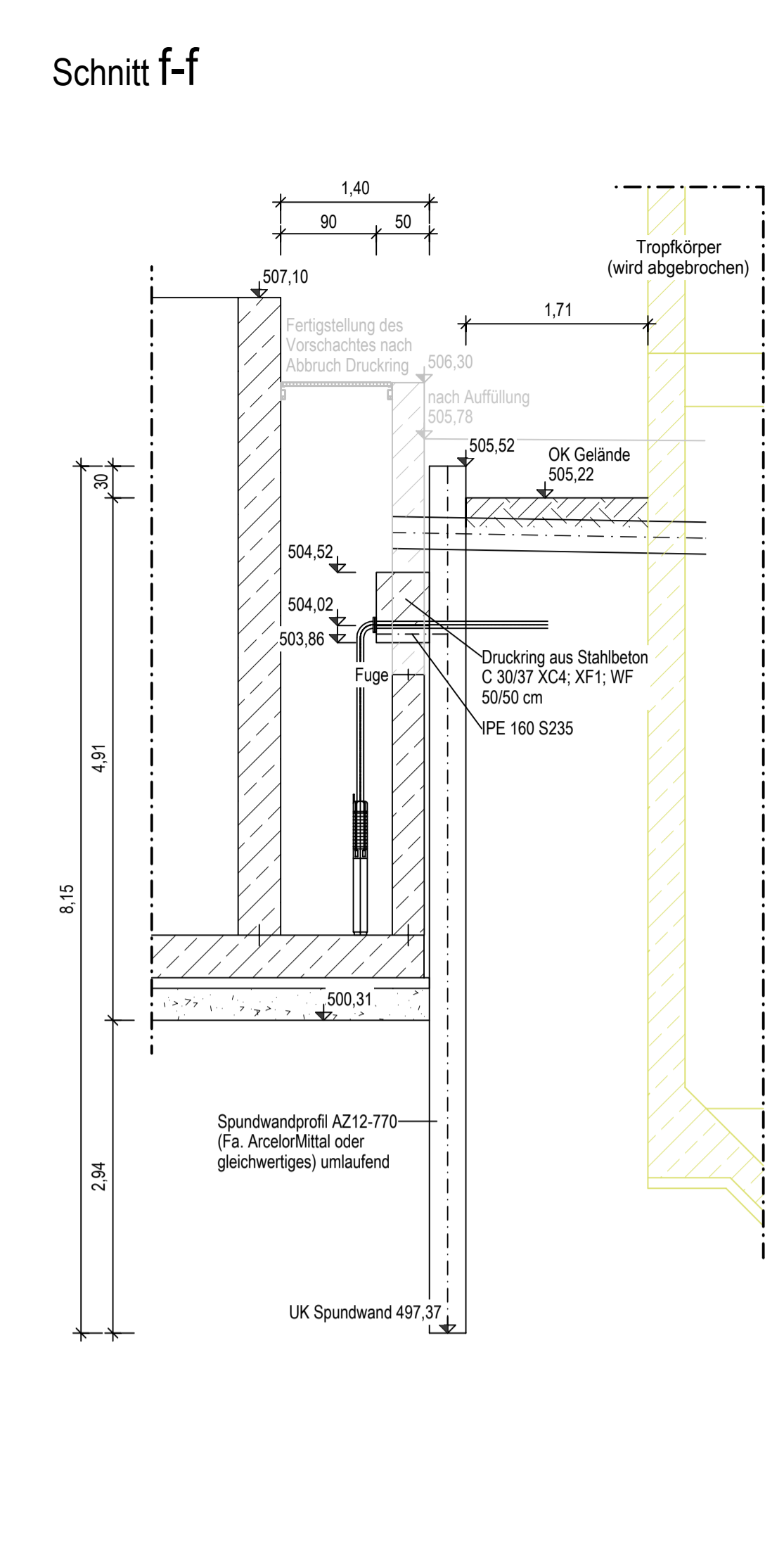
Schnitt a-a



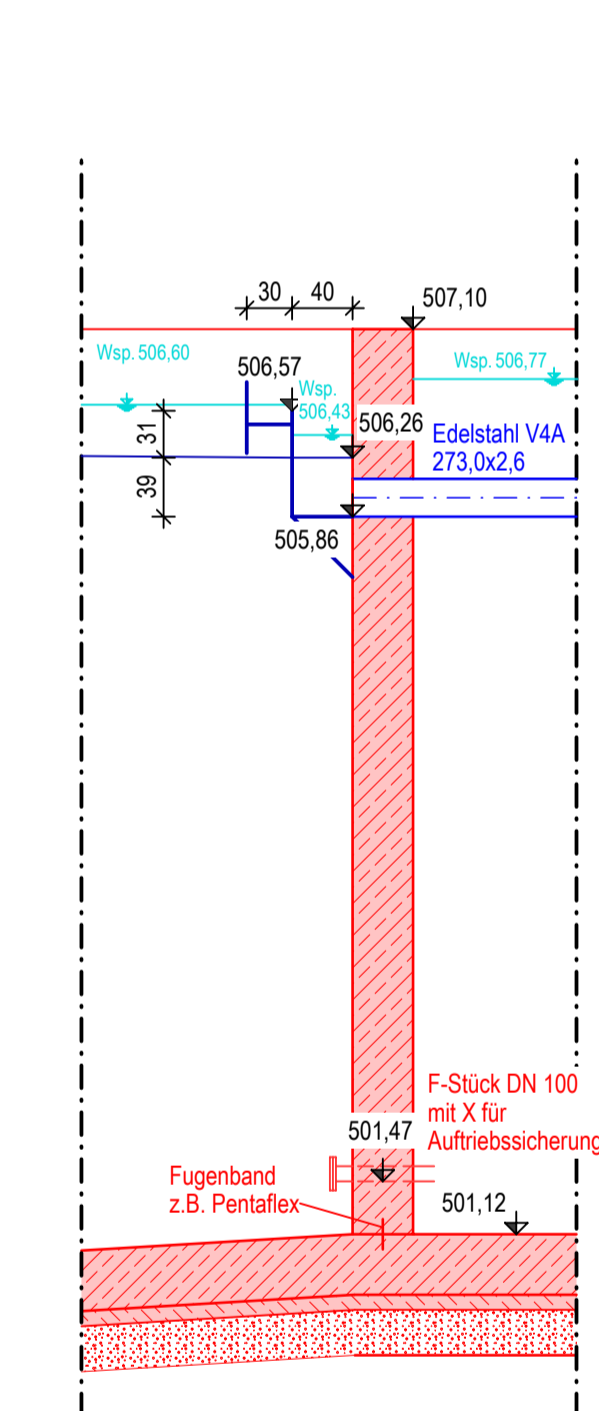
Schnitt e-e



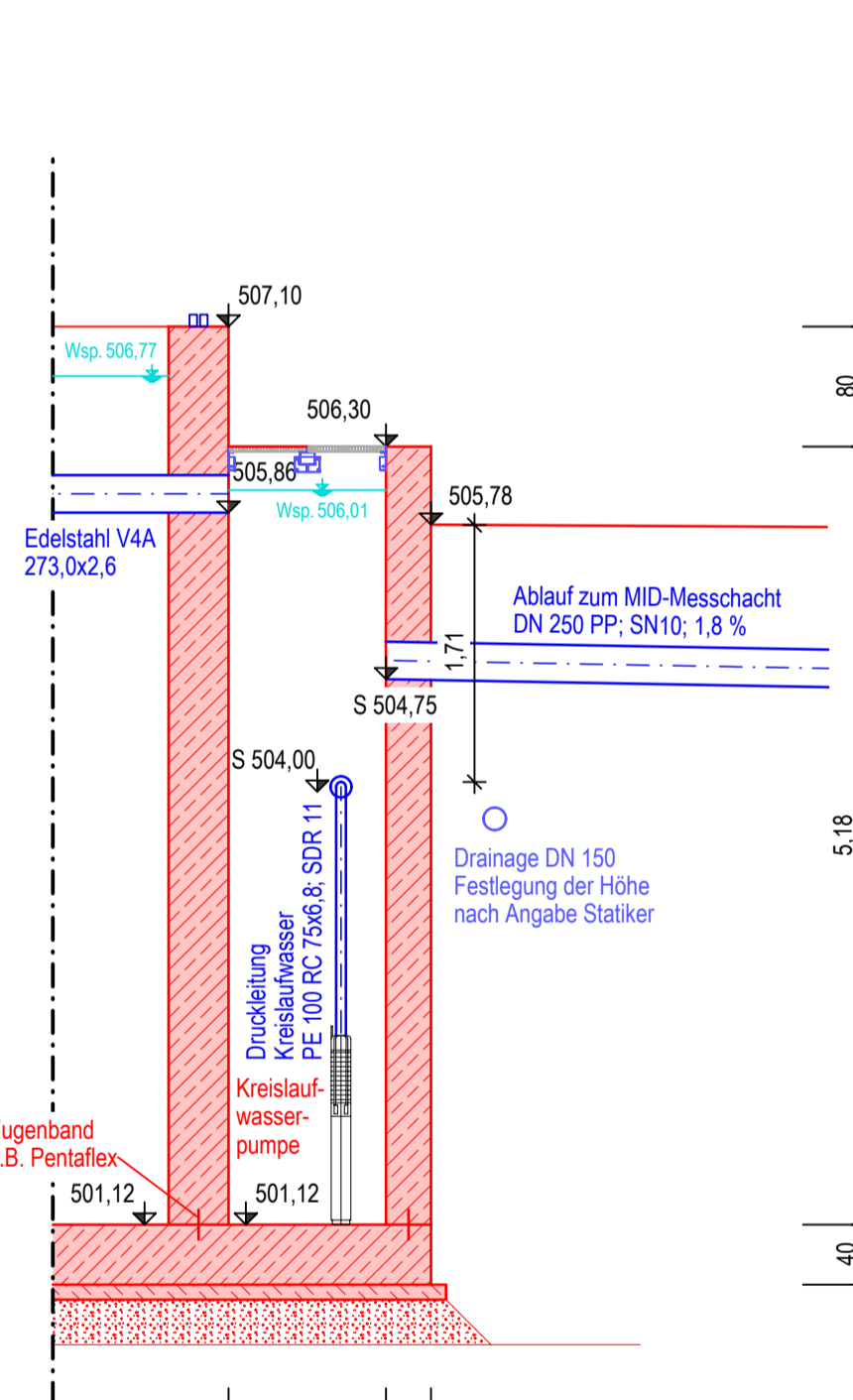
Schnitt f-f



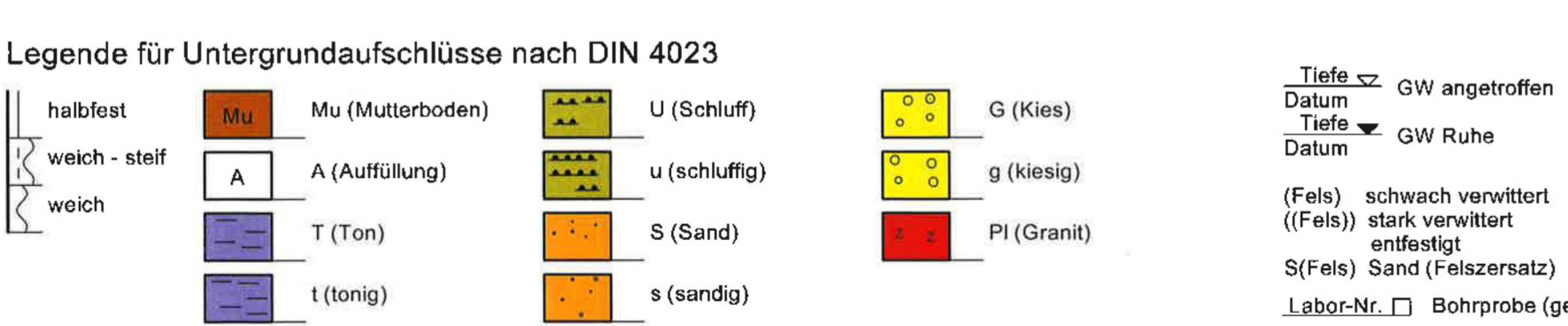
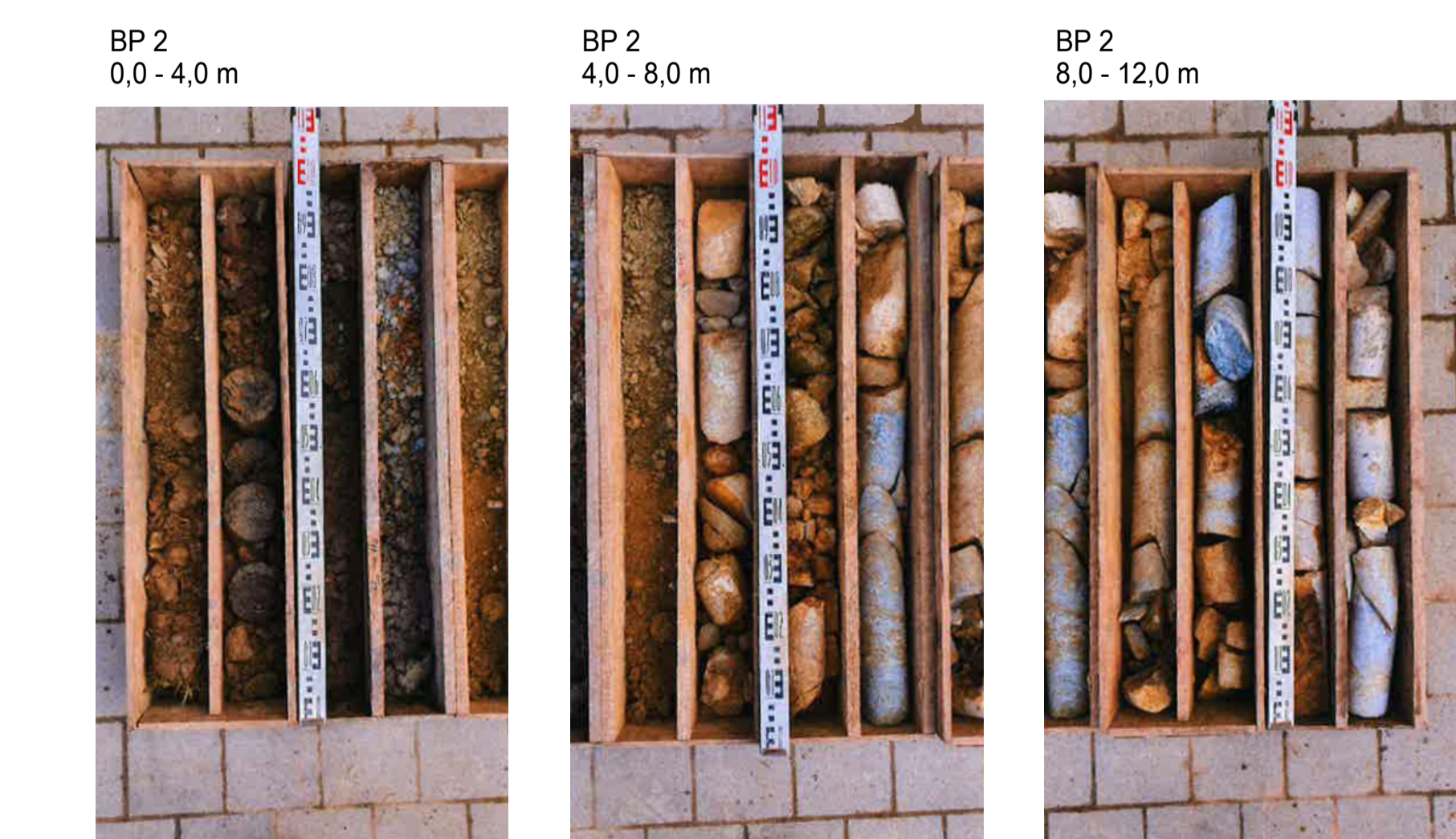
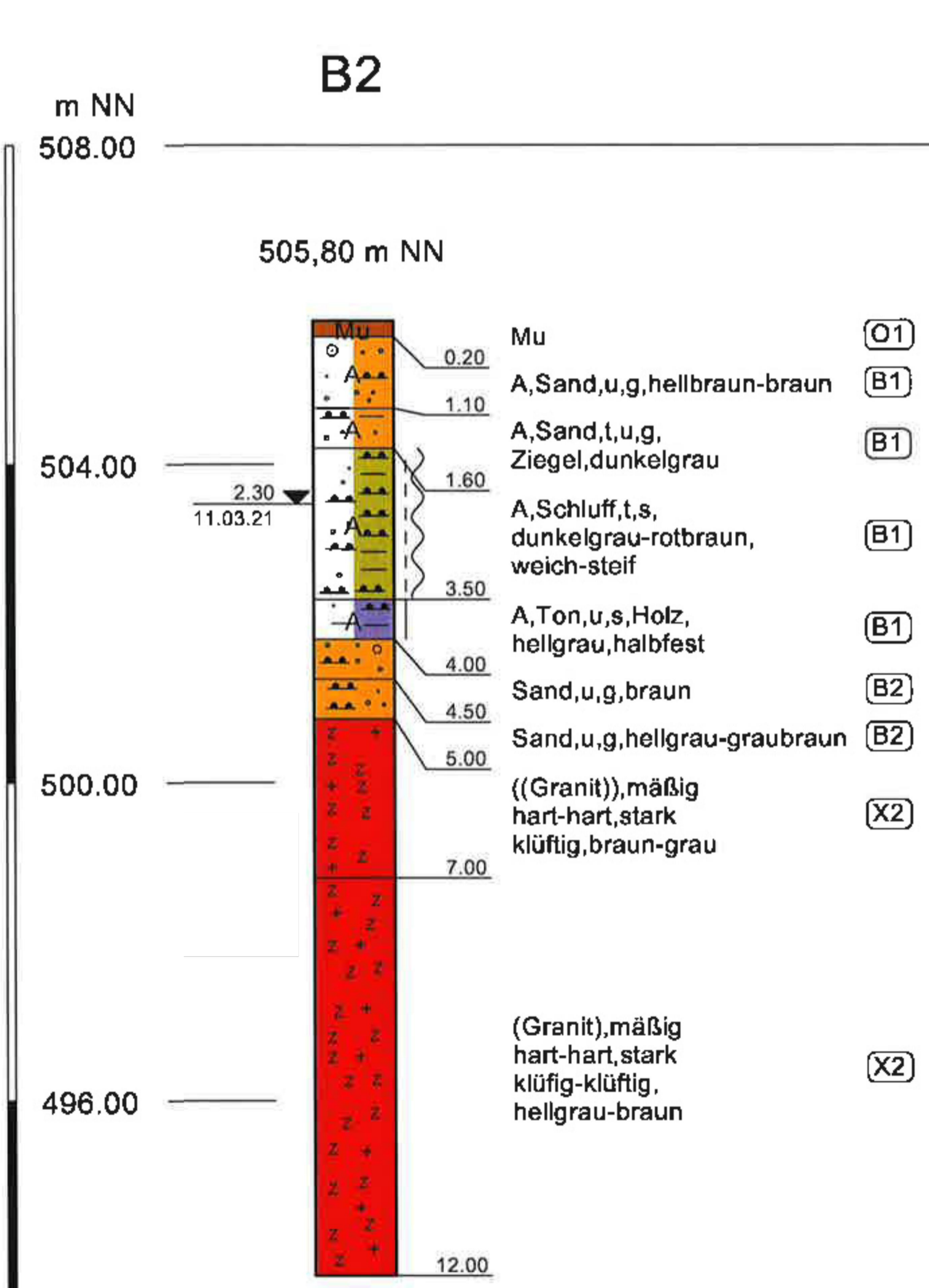
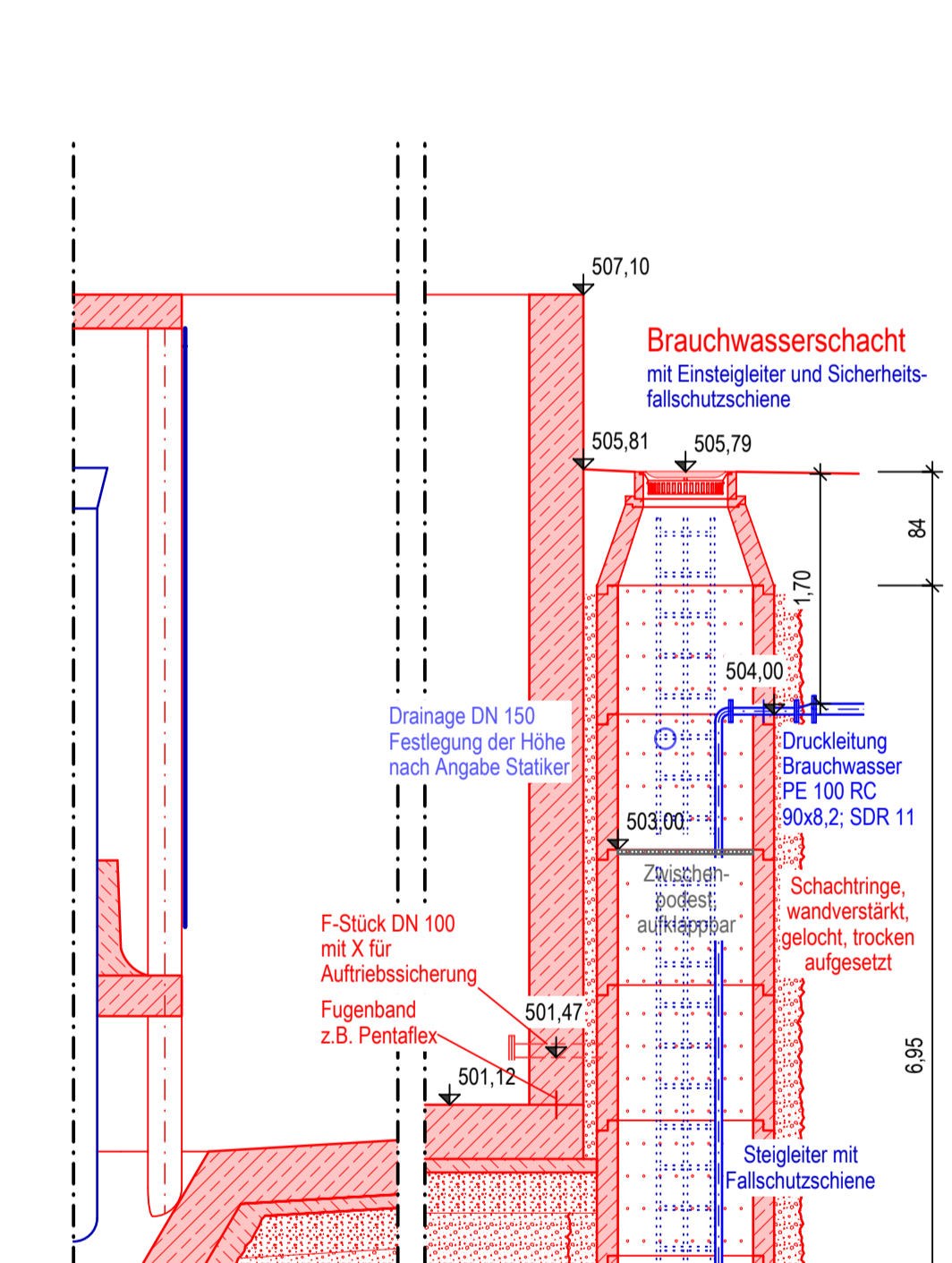
Schnitt b-b



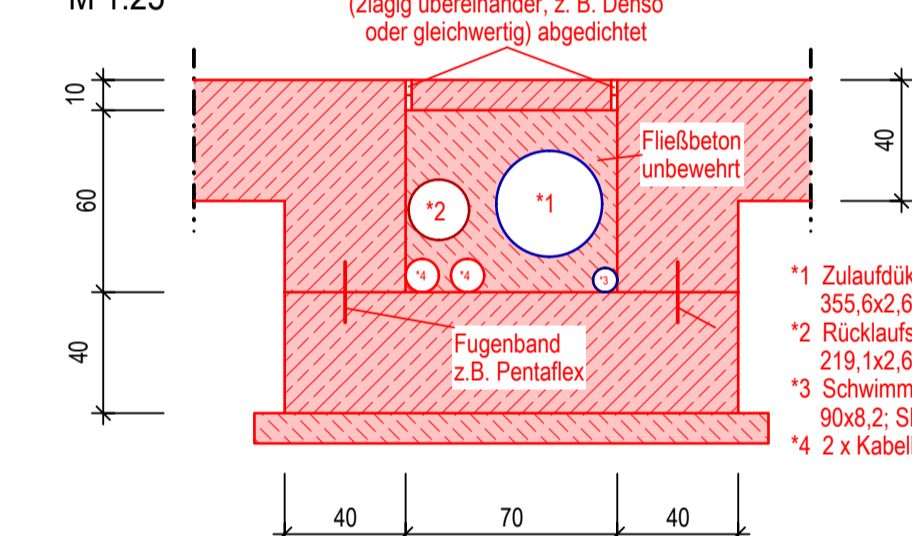
Schnitt c-c



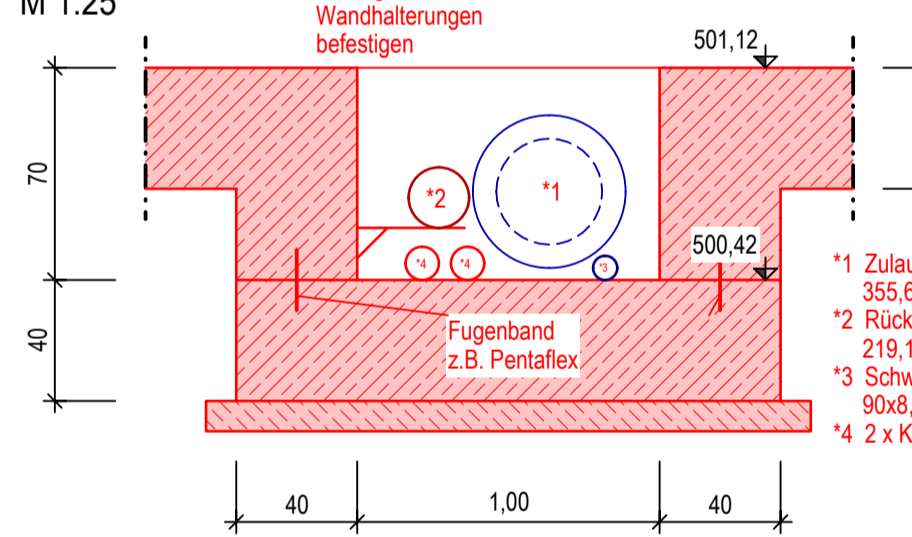
Schnitt d-d



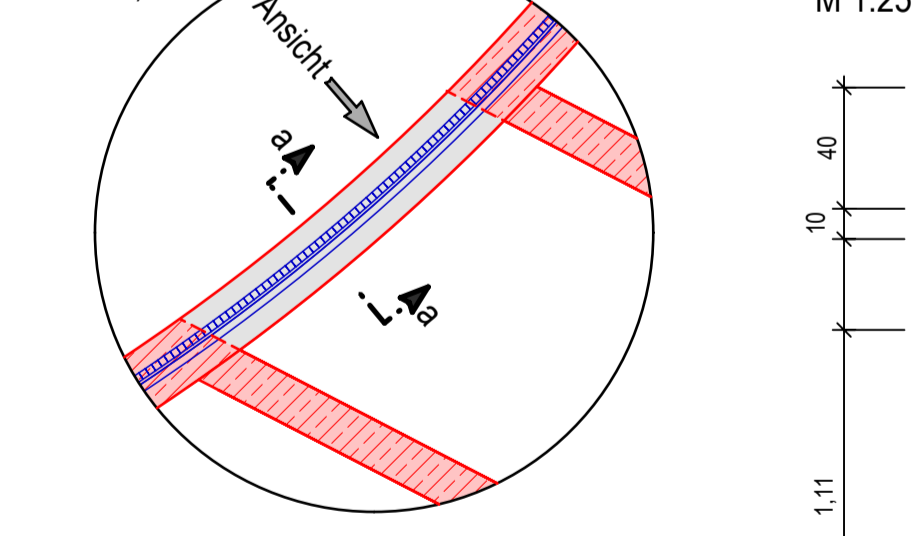
Detail a) M 1:25



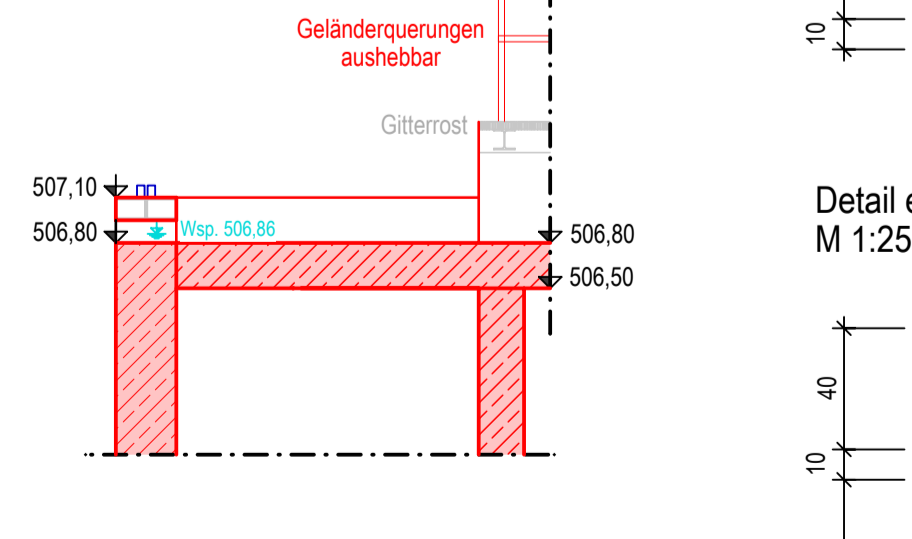
Detail b) M 1:25



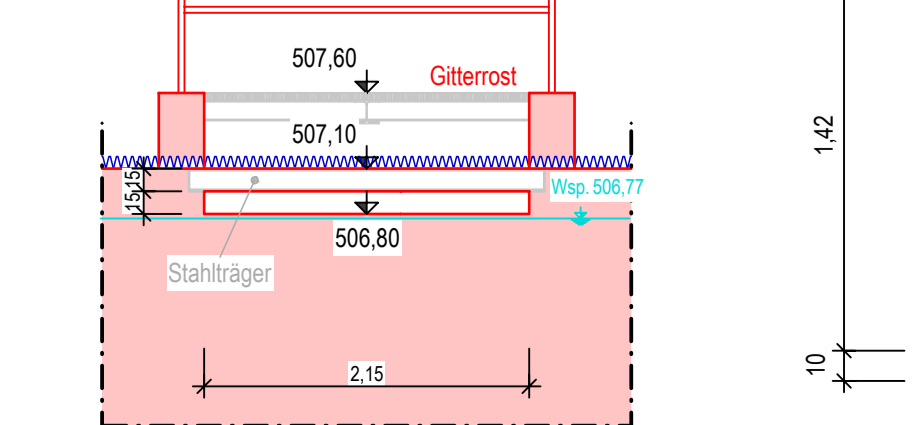
Detail c)



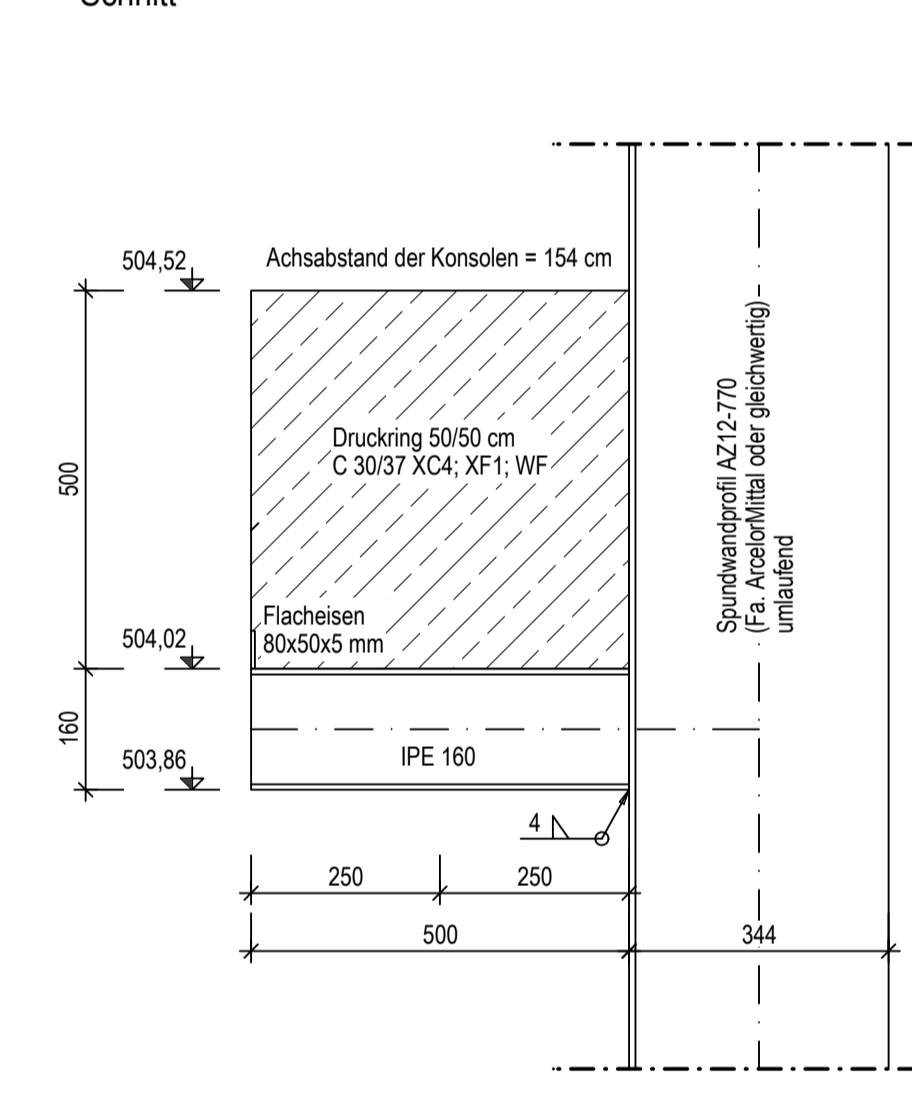
Schnitt a-a



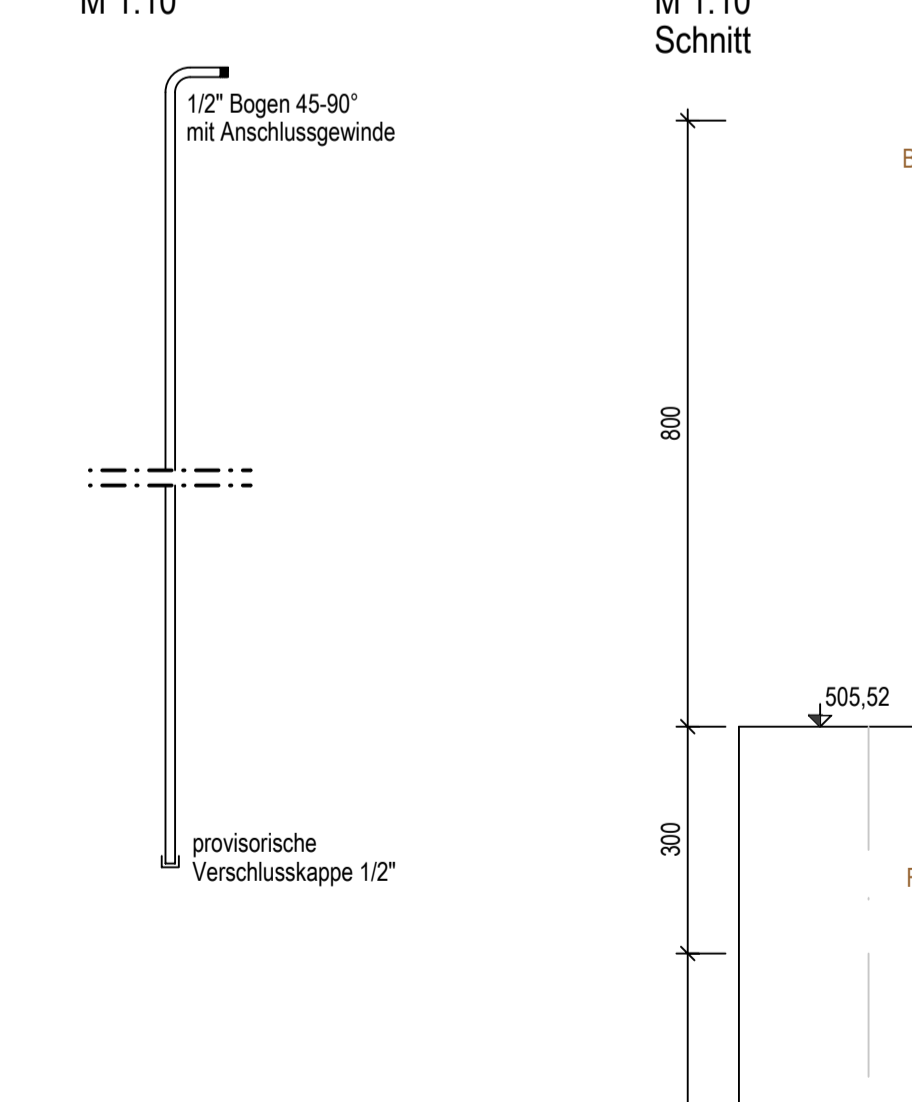
Ansicht



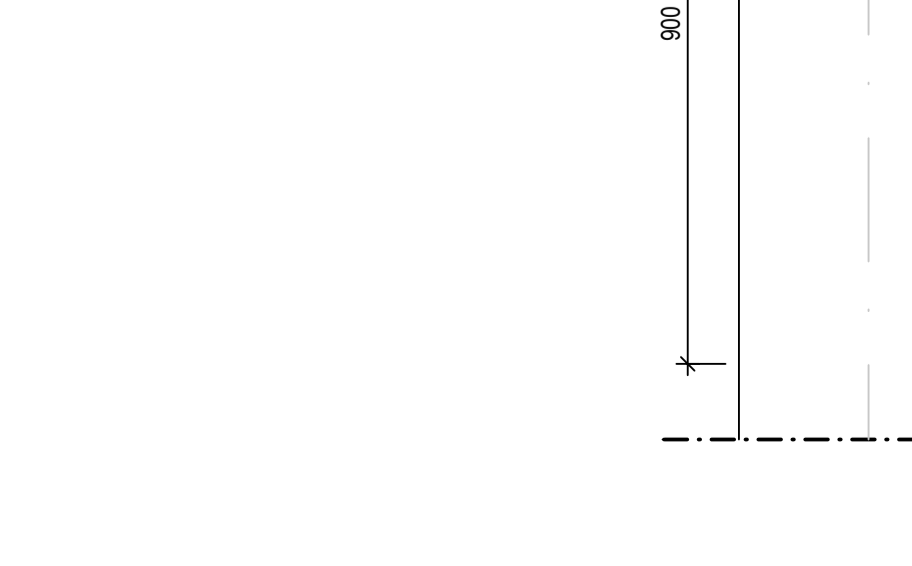
Detail f) M 1:10 Schnitt



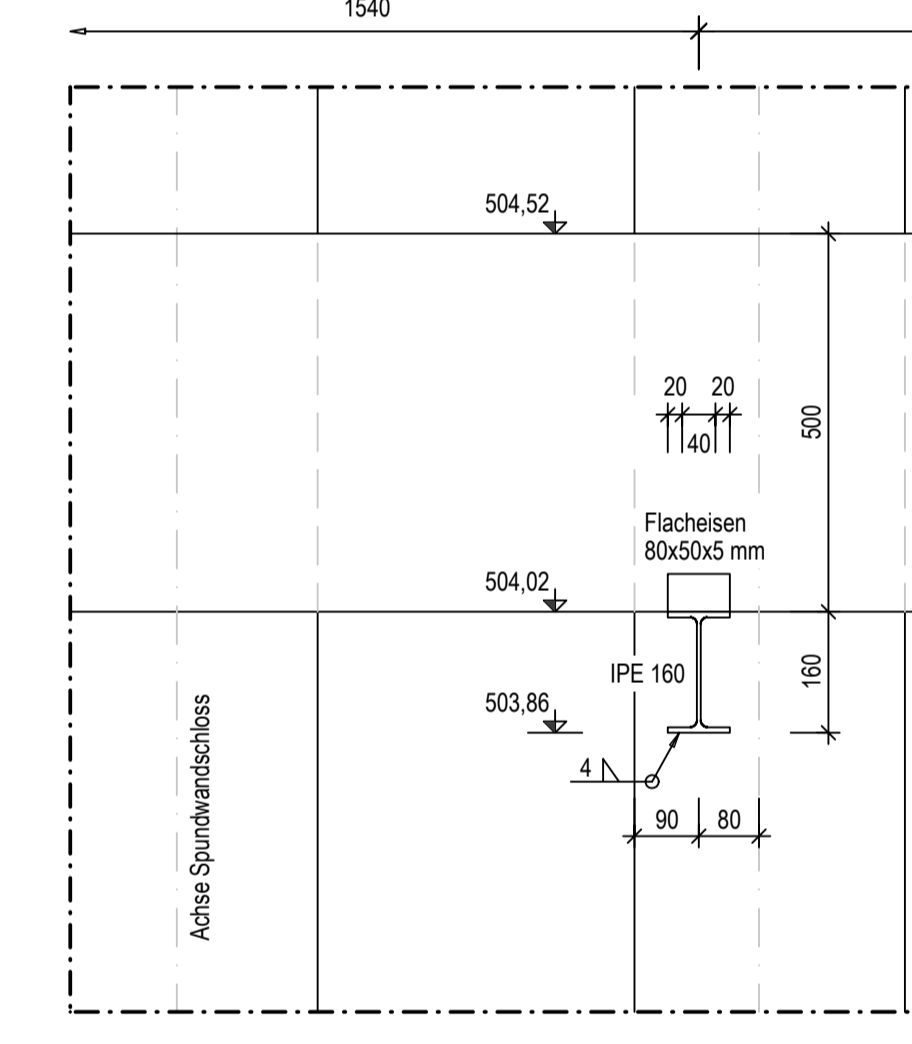
Detail g) M 1:10 Schnitt



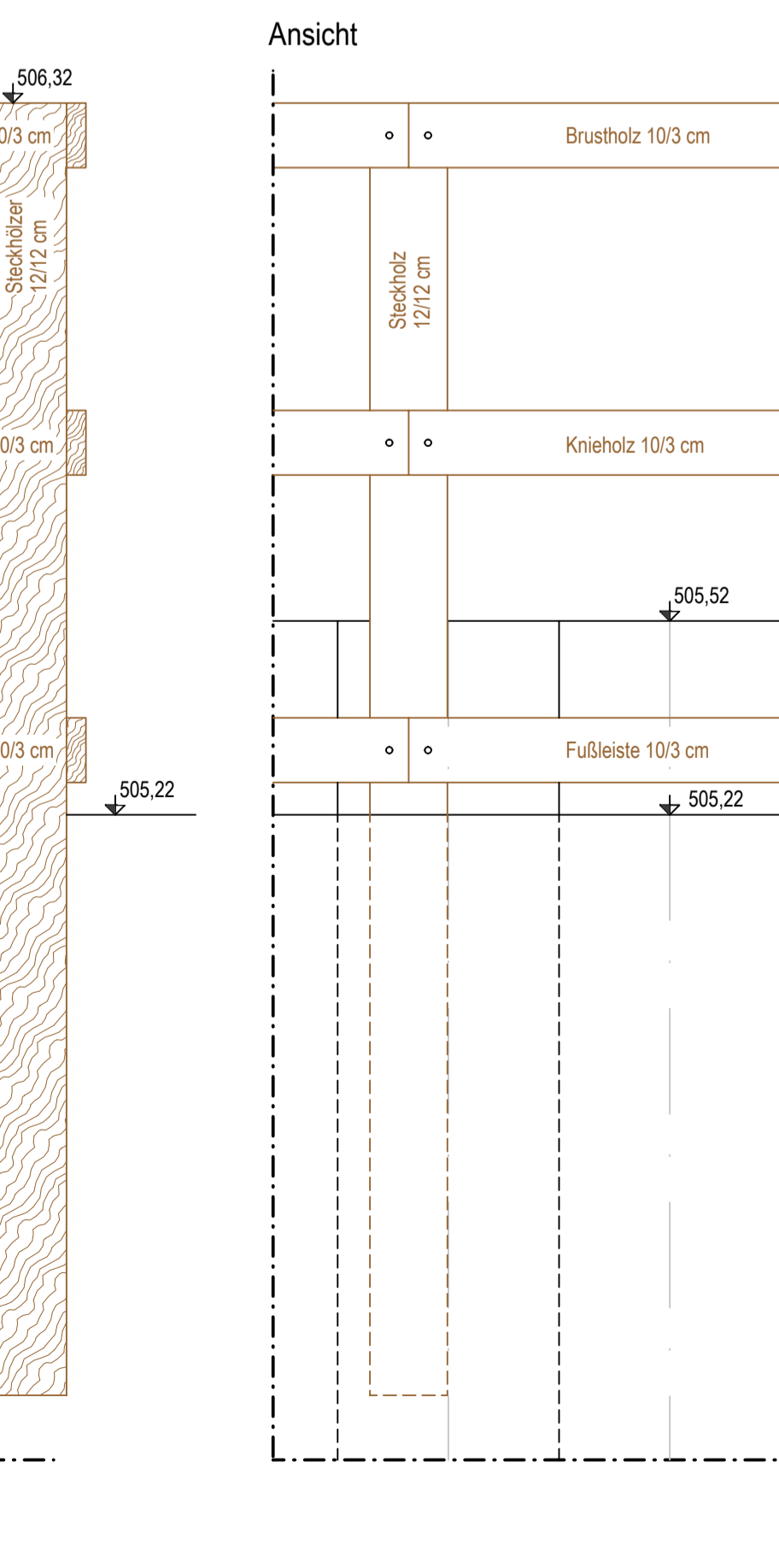
Detail h) M 1:10 Schnitt



Ansicht



Ansicht



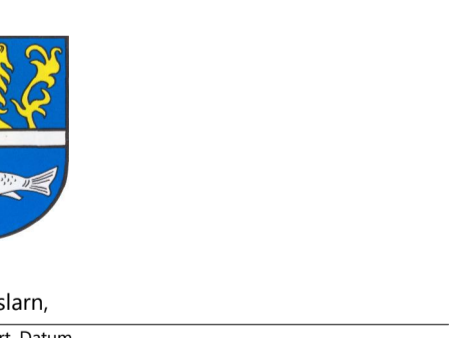
Zeichenerklärung:
 maximaler Wasserspiegel

Das Becken ist bis zu einem Wasserstand von 92.72 m ü. NN aufreissicher. Der Einbau einer Flutgitteröffnung bei 502.52 m ü. NN wird empfohlen. Kabelverlauf siehe Lageplan Elektroplaner.

Markt Eslarn
 Marktplatz 1
 92693 Eslarn
 AUFTRAGGEBER

Beratende Ingenieure
 Bauingenieurwesen
 zwick ingenieure

Ertüchtigung der Kläranlage
 Ausbaugröße 4.800 EW (BSB)
 PROJEKT
 Kombibecken
 (Belebungsbecken / Nachklärbecken)
 Schnitte, Details
 PLANARBEIT



K. Schemmel
 gest. von
 G. Schwab
 gest. von

Weiden, 20.06.2023
 Ort Datum

Z054-091-24
 PLANNUMMER

Entwurfsplanung
 LEISTUNGSSTADIUM
 1:50; 1:25; 1:10
 MASSSTAB